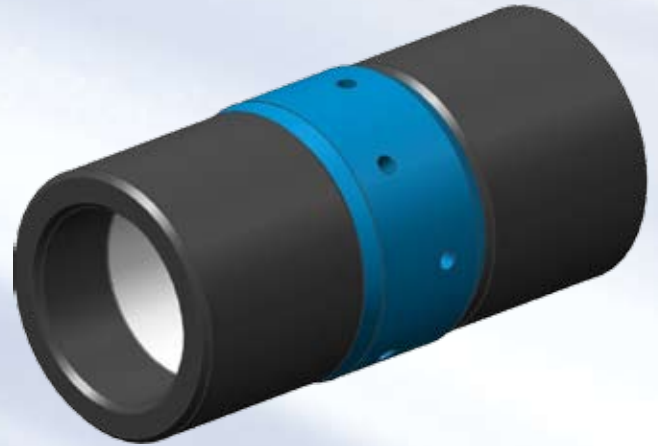


..... Swell Sleeve

Overview

The Swell Sleeve is designed primarily for low pressure applications.

- Swellable rubber on external & internal of sleeve
- External rubber seals off the annulus between the base pipe and the open hole
- Internal rubber seals between the base pipe and the sleeve
- Center OD slightly larger and acts as centralizer



Features and Benefits

- Provides significant cost savings
- Manufactured to suit field conditions
- Stored at site ready for use
- Can be used in many applications
- Strong and durable packer
- Simple - there are no moving parts
- No additional site crew
- Long life span
- No personnel required

Installation Process

The Swell Sleeve swellable elastomer is vulcanized directly onto the sleeve to creating a strong and durable packer. The Swell Sleeve is shipped from our manufacturing plant to the well site or customer's warehouse in a ready to run condition. All that is required for installation is that the rig crew remove the protective covering from around the Swell Sleeve, slide it over the pipe and tighten the grub screws with the torque wrench provided. Alternatively, the Swell Sleeve can be applied to sand screen joints prior to shipping to the rig site.



Available in either Oil (red center), Water (blue center), or combination (green center).

Typical Installation Layout

Swell Sleeves are available as an off the shelf sleeve, or custom designed specifically for the well requirements. Our sleeves conform to the most commonly found well sizes and conditions in your region and are primarily intended for fast turn-a-round or contingency applications. Typically held on the rig site and run on sand screen base pipe to prevent flow and hold pressures of up to 1,600 psi. Using our modeling software, the Swell Sleeve can be configured to suit the well application with as many Swell Sleeves being run in series as required.



Standard Sleeve Specifications

Sleeve Size	Casing	OpenHole	Sleeve Max OD	Rubber OD	Rubber Wall	Minimum Clearance	Rubber OD with 50% Swell
2-7/8"	5-1/2" 17#	4.75	4.50	4.35	0.59	0.25	4.94
3-1/2"	7" 35#	6	5.75	5.59	0.866	0.25	6.456
4	7" 35#	6	5.71	5.59	0.63	0.29	6.22
4-1/2"	7" 32#	6.125	5.87	5.79	0.472	0.26	6.259
4-1/2"	8-5/8" 44#	7.625	6.81	6.65	0.905	0.81	7.555
5	8-5/8" 44#	7.625	7.28	7.12	0.905	0.35	8.025
5-1/2"	9-5/8" 53.5#	8.5	8.03	7.87	0.905	0.47	8.775
6-5/8"	9-5/8" 53.5#	8.5	8.25	8.17	0.55	0.25	8.72
7	10-3/4" 55.5#	9.75	9.37	9.21	0.905	0.38	10.115
7-5/8"	11-3/4" 60#	10.75	10.24	10.08	0.905	0.51	10.985

Temperature Range 113 - 300 F

Standard Length 17"

Oil and Water Swellable

Swell Design Parameters

